


Table of Contents

Histograms.....	2
DAT/SDX histogram.....	2
Event histogram.....	3
Pattern histogram.....	3

Histograms

DAT/SDX histogram

The chart can be shown as histogram, showing various data statistics.

Click the **Histogram** button  on the chart bar and the following window appears:

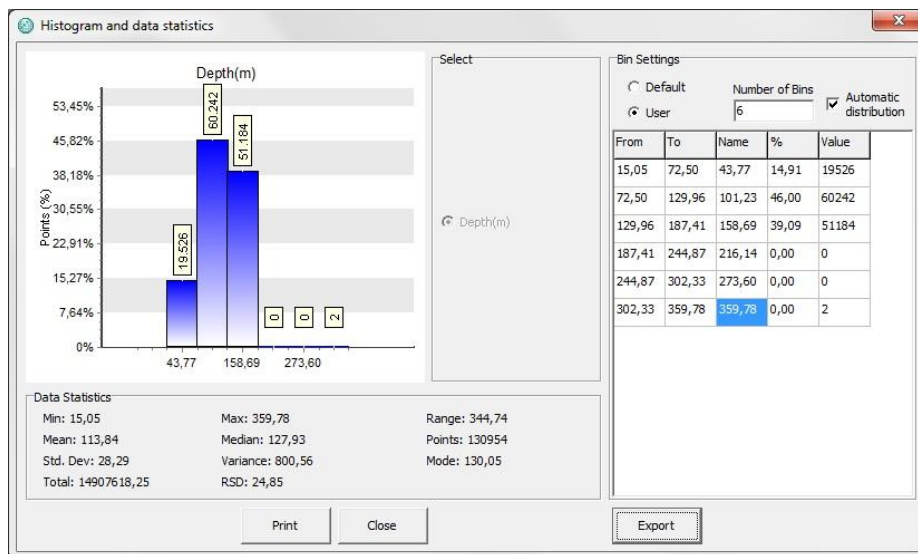


Figure 1 Histogram and data statistics

Under **Bin Settings** there are two options, **Default** and **User**. Select **User** to select the number of bins and the minimum and maximum values you wish to display. In **Name** enter the title of the column. If you enter the following formulas [min] [mid] [max] in the **Name** column the numerical value will appear automatically.

Data points are divided into groups defined by the **From** and **To** rows. If groups overlap the first valid group row is used.

You can display and hide the bin tags by clicking on the bins.

The Histogram can be printed out by clicking the **Print** button.

Event histogram

The event histogram has the same functions as the DAT histogram except that you can view the data either by **Amplitude** or **Duration** (see figure 2).

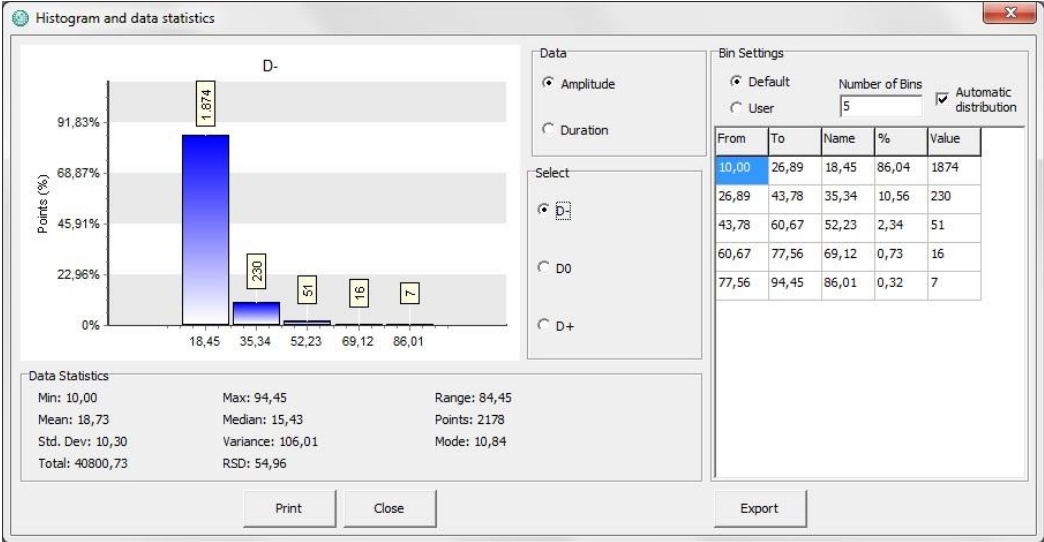


Figure 2 Event histogram

Pattern histogram

The pattern histogram has the same functions as the DAT histogram except that you can view the data either by **Amplitude** or **Duration** (see figure 3).

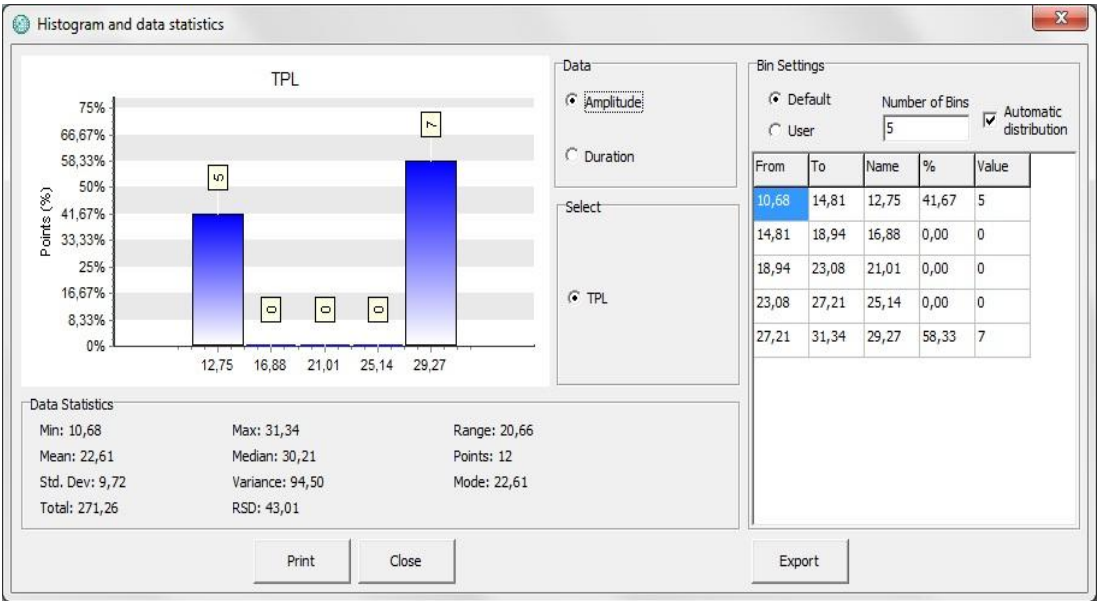


Figure 3 Pattern histogram